



PC215T-10-4

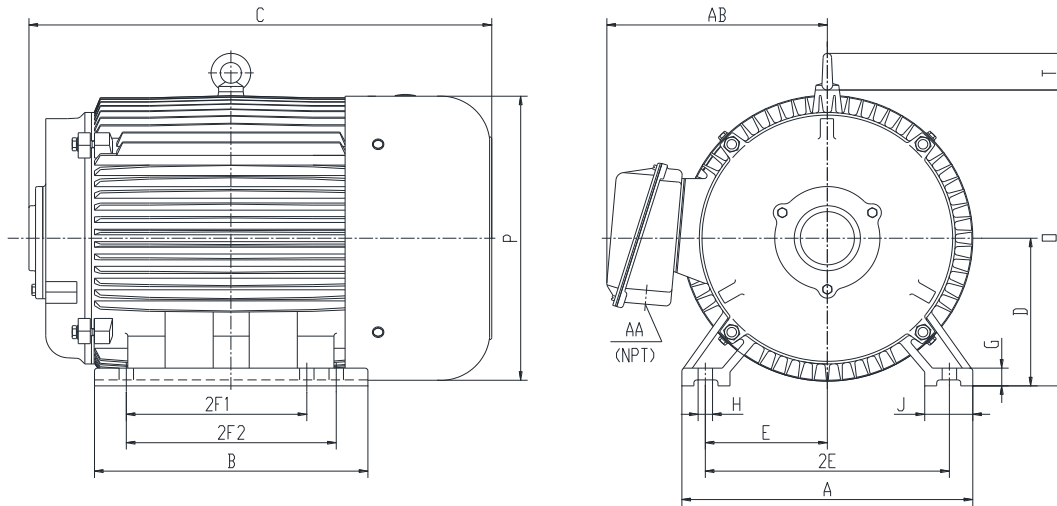
CONVERTER

DESIGNED FOR USE WITH ROTARY PHASE CONVERTER UNITS

TOTALLY ENCLOSED FAN COOLED

SPIKE RESISTANT WIRE (2200V PEAK VOLTAGE SPIKE RATING)

Factory Certified for T2B Class I, Division II, Groups A,B,C & D and Class II, Division II, Groups F & G



DIMENSIONS

HP	RPM	Frame	MOUNTING													
			A	B	C	D	G	H	J	E	2E	2F1	2F2	O	P	T
10	1800	215T	11	9.4	16.9	5.25	0.7	0.41	2.4	4.25	8.5	5.5	7	10.5	10.2	1.9

Conduit Box		Bearings		Mount
AA	AB	DE	ODE	
1	8.3	6308-ZZ	6308-ZZ	F1

BEARING LUBRICATION: The bearings come lubricated with Mobil Polyrex EM Polyurea Grease.





PC215T-10-4

CONVERTER

DESIGNED FOR USE WITH ROTARY PHASE CONVERTER UNITS

TOTALLY ENCLOSED FAN COOLED

SPIKE RESISTANT WIRE (2200V PEAK VOLTAGE SPIKE RATING)


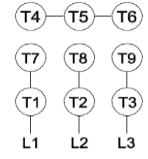
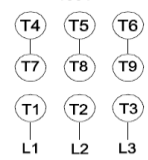
Factory Certified for T2B Class I, Division II, Groups A,B,C & D and Class II, Division II, Groups F & G

PERFORMANCE DATA

HP	RPM	Frame	Voltage	Frequency (Hz)	Full Load S.F.	Insulation Class	NEMA Design	Slip (%)	NEMA Code	Enclosure Type	IP Rating	Max. Ambient
10	1740	215T	208-230/460	60	1.15	F	B	3.3	H	TEFC	55	40 °C

Amps (460V)		Efficiency (%)		Power Factor	Torque (ft-lb)			DE Bearing	ODE Bearing	Connection	Weight (lbs.)
FLA	LRA	NOM.	MIN.	100%	FLT	LRT %	BDT %	6308-ZZ	6308-ZZ	9 Lead 2Y/Y	166
12.3	81	87.5	85.5	0.84	30.2	230	270				

NAME PLATE

 ROTARY PHASE CONVERTER INVERTER DUTY 20:1 VT; 10:1 CT Hernando, MS 38632										CONNECTION DIAGRAMS																
CAT NO.		PC215T-10-4				FRAME		215T		WT/LBS		166			208-230V											
HZ		60		S.F.		1.15		HZ		50		S.F.		1.0		ENCL		TEFC		IP		55				
HP		10		RPM		1800		HP		10		RPM		1500		DUTY		CONT		DES		B				
VOLTS		208-230/460				VOLTS		190/380				AMB		40 °C		INS		F								
AMPS		26.6-24.6/12.3				AMPS		29.6/14.8				DE BRG		6308-ZZ												
CODE		H		P.F.		0.84		CODE		F		P.F.		0.86		ODE BRG		6308-ZZ								
EFF		87.5		MIN		85.5		EFF		85.0		MIN		82.0		SER NO										
ISO9001 CERTIFIED		AC INDUCTION CONVERTER						CE		SP		C		US												

APPLICATIONS:

Specifically designed for use as the converter component for rotary phase converters.